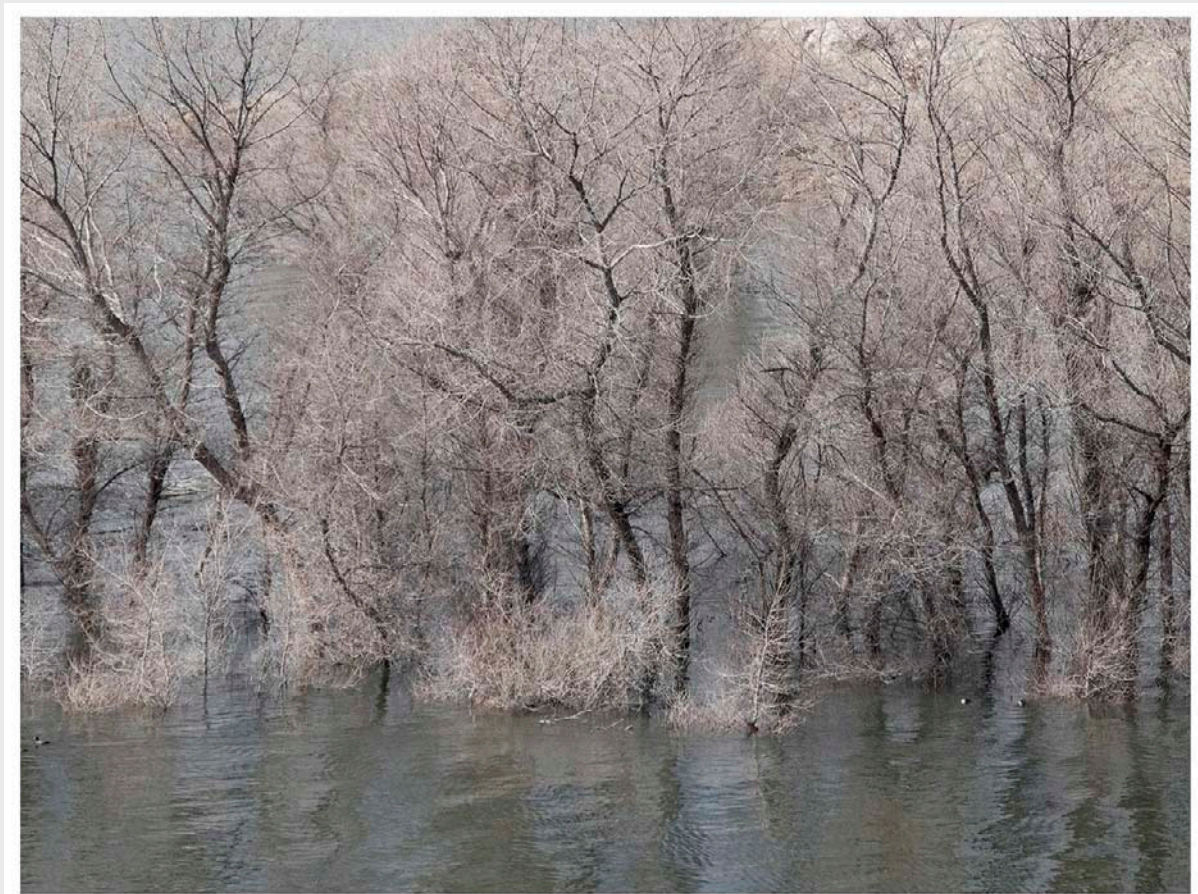


The Art of Digital Fine Art Printing

Using today's inkjet Printers for Quality Prints

Edition 2008



Uwe Steinmueller
Juergen Gulbins

DOP3802

The Art of Digital Fine Art Printing

Using today's Inkjet Printers for Quality Prints

Uwe Steinmuller, Juergen Gulbins

Publisher: Steinmueller Photo

Find us on the World Wide Web at: www.outbackphoto.com

Layout and Type: Juergen Gulbins

Copy Editor: James Johnson

Uwe Steinmueller uwe@outbackphoto.com

Juergen Gulbins juergen@gulbins.de

Copyright © 2008 by Uwe Steinmueller and Jürgen Gulbins.

EDITION MARCH 2008, DOP3802, 2008-A01.

ISBN: 0-9787497-2-3

NOTICE OF RIGHTS

All rights reserved. No part of this e-book may be reproduced or transmitted in any form, by any means, electronic, mechanical, photocopying, recorded, or otherwise, without prior written permission of the authors. For information on getting permission for reprints and excerpts, contact the authors at the address given above.

NOTICE OF LIABILITY

Information in this e-book is distributed on an "As Is" basis, without warranty. While every precaution has been taken in the preparation of the book, the authors shall not have any liability to any person or entity with respect to any loss or danger caused or alleged to be caused directly or indirectly by the instructions contained in this book or by the computer software products described in it.

TRADEMARKS

Throughout this e-book, trademarks are used. Rather than put a trademark symbol in every occurrence of a trademark name, we state that we are using the names in an editorial fashion only and to the benefit of the trademark owner with no infringement of the trademark.

Contents



Preface

Foreword by Mac Holbert (Nash Editions)

ix

xii

1 Printing Techniques 1

- 1.1 Basic Printing Techniques 2
 - How Many Pixels or Dots Per Inch Do You Really Need? 6
- 1.2 Offset Printing 8
- 1.3 Laser Printers 9
- 1.4 Dye-Sublimation Printers 11
- 1.5 LightJet® Printing (Digital Photo Print) 12
- 1.6 Inkjet Printing 15
 - Inkjet Technology 15
 - Droplet Size 17
 - Printer Resolution 17
 - Number of Inks 18
 - Type of Inks 18
- 1.7 Other Printing Techniques 19
- 1.8 How to Pick Your Fine Art Printer 19

2 Inks, Papers, and Print Permanence 27

- 2.1 Print Permanence 28
 - Light as a Factor of Print Permanence 31
 - Temperature Influencing “Dark Fading” 31
 - Humidity 32
 - Gases and Their Influence on Print Permanence 32
 - Paper Additives 32
 - How to Improve the Permanence of Your Prints 33
- 2.2 Inks 34
 - Dye-Based Inks 34
 - Pigmented Inks 35
- 2.3 Papers 36
 - Paper Characteristics 37
 - Paper Ingredients 38
 - Whiteness and Brightness 39
 - Paper Coating 41
 - Paper Surface – Paper Finish 43



	Paper Size	44
	Matching Inkjet Technology, Subject, Paper, and Ink	44
	Some More Characteristics	45
	Other Materials	46
	Paper Handling	47
3	Color Management for Printing	51
3.1	Understanding Different Color Models	52
	RGB Color Model	53
	Lab Color Model	53
	CMYK Color Model	53
	Grayscale Mode	54
	HSB/HSL Color Model	54
	Color Spaces	54
3.2	Understanding Color Management	55
	Why You Need to Understand Color Management	55
	ICC Profiles	56
	What is a Color Management System?	56
	Color Working Spaces	57
3.3	Visualization of Color Spaces	59
3.4	Color Space Mapping	62
3.5	Creating Device Profiles	63
	Camera Profiles	64
	Printer Profiles	64
3.6	Profiling Your Monitor	65
	Calibration by Eye	65
	Hardware-Based Calibration	65
	Calibration Settings	65
	Calibrating and Profiling Using Eye-One Display 2	66
3.7	Photoshop Color-Management Settings	69
3.8	Profiles for Your Printer	72
	Profiling Your Printer	73
	Printer Profiling Using Eye-One Photo	74
3.9	Installing and Uninstalling Profiles	78
3.10	Finding a Printer's Black Point and White Point	79
3.11	Sanity-Check	80
3.12	Soft-Proofing and Gamut Warning	84
3.13	Metamerism and Bronzing	87



4	Fine Art Printing Workflow	89
4.1	Basic Printing Workflow	90
4.2	Tuning Tonality	90
	Global Tonality Tuning	94
	Local Tonality Tuning	100
	Corrections Related to Certain Tonality Ranges (Shadows, Midtones, and Highlights)	104
	Painting Techniques (Mainly Dodge and Burn)	107
	Dodge and Burn Using Layers	109
4.3	Tuning Colors	111
	Selective Saturation Improvements	111
	More Saturation and Contrast Tricks	113
	Variation with “Soft Light”	116
	Removing Blue Shadow Casts	117
4.4	“Ring Around” and Variations	119
	Ring Around	120
	Using Variations	122
4.5	Local Contrast Enhancement	125
4.6	Further Preparations for Printing	128
4.7	Resizing	129
4.8	Sharpening	130



5	Fine Art Printers in Practical Use	133
5.1	Printer Installation	134
5.2	Printer Adjustments	136
5.3	General Driver Tasks and Settings	137
	Settings that Influence Print Quality	137
	More Settings	139
5.4	Summarizing the Relevant Steps for the Actual Printing	141
5.5	Printing from Client Software (Windows)	143
	Page and Printer Setup	143
	Printing from Photoshop CS1 or CS2	144
	Print Dialog with Photoshop CS3	145
5.6	Print Driver Dialog in Windows	147
5.7	Printer Driver Settings in Mac OS X	151
5.8	Printing from Adobe Photoshop Lightroom	156
5.9	Printing Using a Printer Plug-in	159
5.10	Test Prints	162
5.11	Print Quality Related Issues	163
5.12	Some More Recommendations for Printing	164



6	Printing Packages and RIPs	167
6.1	What is a RIP? Why Use a RIP?	168
6.2	Printing Using a Printing Package Qimage	169
6.3	Printing Using a RIP QuadToneRIP ImagePrint by Colorbyte Software EFI Designer Edition	173



7	Black-and-White Prints	183
7.1	Workflow for Black-and-White Prints	184
7.2	From Color to Black-and-White Black-and-White Conversion Using the Channel Mixer Using "Black & White" of Photoshop CS3	186
7.3	Printers with Black-and-White-Enabled Drivers Black-and-White Prints with Epson UltraChrome K3 Printers Black-and-White Prints with HP Photosmart 8750/8450	189
7.4	Special Software (RIPs) for Black-and-White Printing Colorbyte's ImagePrint QuadToneRIP Other Solutions	194
7.5	Soft-Proofing for Black-and-White Prints	196
7.6	Papers for Black-and-White Prints	199



8	Image Evaluation and Presenting Fine Art Prints	201
8.1	Critical Image Inspection Control Tools	202
8.2	Presentation Options	204
8.3	Portfolio Binders	205
8.4	Matting True Matting Principles of the Matting Process A Mat-Cutting Sample Session Faux Matting	206
8.5	Framing a Print	213
8.6	Coating a Print	216
8.7	Displaying a Print in True Light	217
8.8	Storing Prints	219

A	Some Fine Art Printers	221
A.1	General Points on Fine Art Printers	222
	Inks for Black-and-White Prints	222
	Photo Black and Matte Black Simultaneously On-line	222
	Ink Cartridge Volume	223
	Print Plug-ins	223
	Printer Linearization and Calibration	223
	Ways to Prevent Nozzle Clogging	224
	Printer Life Cycles	225
A.2	Epson Fine Art Printers	227
	Epson Stylus Photo R800 / R1800	228
	Epson Stylus Photo R1900	228
	Epson Stylus Photo R2400 / Pro 4800 / Pro 7800 / Pro 9800	232
	Epson Stylus Pro 3800	233
	Epson Stylus Pro 4880 / 7880 / 9880	234
	Epson Stylus Pro 11880	235
A.3	Canon's Fine Art Printers	236
	Canon PIXMA Pro9500	237
	Canon imagePROGRAF iPF5100 / 6100	238
	Canon imagePROGRAF iPF8100 / 9100	245
A.4	HP's Fine Art Printers	246
	HP Photosmart Pro B9180	247
	HP Designjet Z3100 Photo	254
B	Papers for Fine Art Printing	265
B.1	Digital Fine Art Papers	266
	Some Notes on OBAs	267
B.2	Some Examples of Fine Art Papers	270
	Matte Papers	270
	Satin/Glossy Coated Rag Papers	271
	High-Gloss Papers	272
B.3	A New Generation of Fiber-based and Baryt Papers	273
B.4	Specialty Papers and Canvas	275
B.5	Fine Art Papers Well Suited for Black-and-White Prints	275
	A Note on Paper Grammage and Paper Thickness	277
C	Glossary and Acronyms	279
D	Resources	287
D.1	Recommended Books	287
D.2	Organizations and Institutes	287
D.3	Useful Resources on the Internet	288
	Index	295

